

**VANTAGE**<sup>SM</sup>  
INTERACTIVE DATA



# Providing a Window into the Fixed-Income Market and Evaluated Prices

# INTRODUCING VANTAGE

Vantage<sup>SM</sup> is a powerful and intuitive new web application that provides users of fixed-income data across the front, middle and back offices with increased transparency, market sentiment and the ability to improve operational efficiency.

## INCREASE EVALUATED PRICING TRANSPARENCY

Vantage allows clients to visualize Interactive Data's evaluated prices within the context of a broad range of relevant market information, including public and proprietary market data inputs used in the evaluated pricing process. These inputs, featuring Interactive Data's assumptive data and proprietary market color that includes anonymous trades, quotes, dealer runs and market posts, appear side-by-side with our 3pm and 4pm evaluated prices in a single display. This eliminates the need for clicking through multiple web pages or documents.

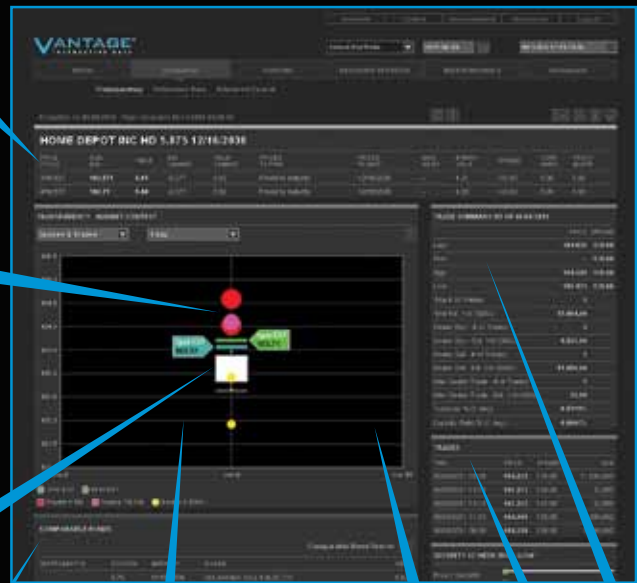
Vantage covers Interactive Data's global corporate bond evaluations, with U.S. municipal bonds, global structured securities and credit default swaps available in the coming months. Vantage also features Interactive Data's high-quality reference data, including corporate actions and business entity information.

Interactive Data's 3pm & 4pm evaluated prices, displayed along with high-level assumptive data

Publicly disseminated trade data displayed in the form of dots, color and size coded according to the size of the trade

Interactive Data's proprietary market color (quotes and trades), displayed in a box plot framework

Comparable bond search tool provides additional context



Combination of trades and market color provides market data context that was available at the time of evaluation

Clients will soon be able to upload their own market data, providing an even richer market data context

Trading activity is provided in traditional tabular format, with both summary and individual trade-level views

Vantage delivers a range of complementary information to provide you with greater transparency, including:

**FINRA-Interactive Data Structured Products Aggregate Reports**

These reports incorporate FINRA TRACE® data to offer an aggregate summary of daily transactions in the U.S. Structured Securities market by asset class.

**FINRA TRACE Corporate Bond Transactions Data**

Displays intraday transaction information for viewing alongside the evaluation.

**History**

Supports clients' daily and historical validation processes with up to one year of historical data.

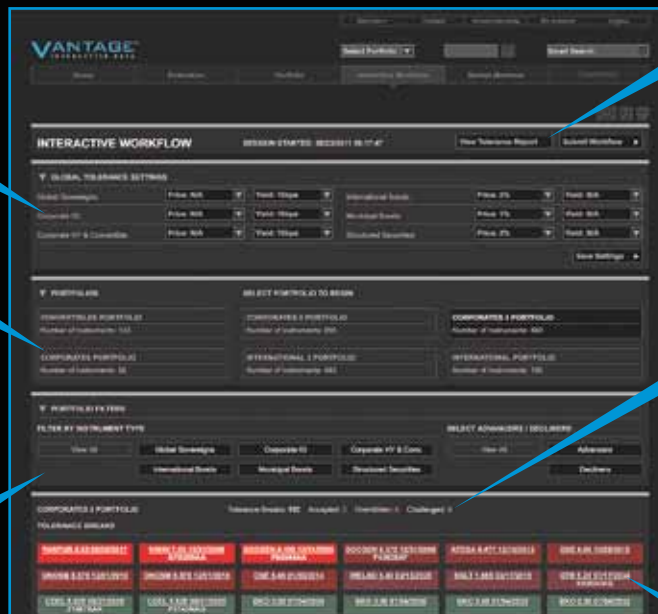
**IMPROVE OPERATIONAL EFFICIENCY**

Today, many back office and compliance functions are reliant on spreadsheets and dependent on manual processes. Vantage features an automated end-to-end back office workflow solution to help you efficiently manage your valuation process through an auditable, controlled and spreadsheet-free reporting environment.

User-customizable tolerance settings filter tolerance breaks based on % price or yield bps movements by instrument type

Portfolios are preloaded into the Workflow application along with Interactive Data's evaluated prices

Additional portfolio-level filtering allows clients to drill down and focus on the work that's most relevant to them



Workflow activities are recorded behind-the-scenes in an auditable report and end-of-day price set, downloadable in both Adobe® PDF and Excel® formats

The interactive Workflow application is easy to use and minimizes manual work, freeing users to focus on analysis

Tolerance breaks are displayed in a dynamic user-sortable and filterable heatmap

By completing risk management and compliance tasks through an integrated Web application instead of through a collection of internally maintained spreadsheets, you can minimize file download and data loading errors, control and track the validation process, and quickly complete end-of-day tasks when time is limited.

Vantage quickly displays relevant files, including end-of-day evaluated prices immediately upon their release, as well as tolerance and magnitude reports through an intuitive, user-friendly web interface. After storing daily price-change tolerance settings, Vantage displays the portfolio in a color-coded heat map, filtered and sorted according to clients' criteria.

Tolerance breaks above or below pre-determined thresholds are clearly differentiated from the rest of the portfolio, thereby focusing attention on bonds whose evaluations have broken tolerance. The direction and magnitude of tolerance breaks is indicated by a color gradient. For security specialists, tolerance breaks also may be filtered by instrument type or by advancing/declining issues. In addition, evaluated price challenges can be seamlessly uploaded from Vantage into Interactive Data's Evaluated Pricing Challenge portal, further speeding client workflow.

## CREATE CONSOLIDATED REPORTS

Vantage generates pre-formatted and custom reports on a daily or monthly basis to support your evaluated pricing oversight process. Consolidated reports on tolerance and challenge activity can be produced by region, by instrument type, and by action taken (such as evaluated price accepted or overridden). Custom reports can be made available for clients by special request.

## INTEGRATE WITH OTHER INTERACTIVE DATA PLATFORMS

With Vantage, a client can directly access other Interactive Data platforms including FundRun<sup>SM</sup> and 360View<sup>SM</sup> and the Evaluated Pricing Challenge Portal. These platforms automatically link to Vantage and collect related data from Vantage.

Reports downloadable in Adobe PDF format for audit/compliance record keeping or Excel format for easy uploading to accounting systems

Detailed month-to-date Activity Log view of evaluated price validation activities

ASSET	MATURITY	MKT VAL	VOL	ISSUANCE DATE	COMMENT	TOLERANCE	ASSET CLASS	STATUS	ACTION
12/15/2015	12/15/2015	100,000	0.00	12/15/2015		0%	Corp-RT-Cover	OK	Challenge
12/15/2015	12/15/2015	100,000	0.00	12/15/2015		0%	Corp-RT-Cover	OK	Challenge
12/15/2015	12/15/2015	100,000	0.00	12/15/2015		0%	Corp-RT-Cover	OK	Challenge
12/15/2015	12/15/2015	100,000	0.00	12/15/2015		0%	Corp-RT-Cover	OK	Challenge
12/15/2015	12/15/2015	100,000	0.00	12/15/2015		0%	Corp-RT-Cover	OK	Challenge
12/15/2015	12/15/2015	100,000	0.00	12/15/2015		0%	Corp-RT-Cover	OK	Challenge
12/15/2015	12/15/2015	100,000	0.00	12/15/2015		0%	Corp-RT-Cover	OK	Challenge
12/15/2015	12/15/2015	100,000	0.00	12/15/2015		0%	Corp-RT-Cover	OK	Challenge
12/15/2015	12/15/2015	100,000	0.00	12/15/2015		0%	Corp-RT-Cover	OK	Challenge
12/15/2015	12/15/2015	100,000	0.00	12/15/2015		0%	Corp-RT-Cover	OK	Challenge

Six month aggregated report view available, detailing evaluated price validation history by region, asset type, three month trend, and general market volatility

**TO ARRANGE A DEMONSTRATION** <https://vantage.interactivedata.com>  
 If you wish to learn more about how Vantage can expand your insight into the fixed income markets and evaluated prices, contact an Interactive Data sales representative or email [info@interactivedata.com](mailto:info@interactivedata.com)



## ABOUT INTERACTIVE DATA

Interactive Data Corporation is a trusted leader in financial information. Thousands of financial institutions and active traders, as well as hundreds of software and service providers, subscribe to our fixed income evaluations, reference data, real-time market data, trading infrastructure services, fixed income analytics, desktop solutions and web-based solutions. Interactive Data's offerings support clients around the world with mission-critical functions, including portfolio valuation, regulatory compliance, risk management, electronic trading and wealth management. Interactive Data is headquartered in Bedford, Massachusetts and has over 2,500 employees in offices worldwide.

Pricing, evaluations and reference data are provided in the U.S. through Interactive Data Pricing and Reference Data, Inc. and internationally through Interactive Data (Europe Ltd. and Interactive Data (Australia) Pty Ltd.

### NEW YORK

100 William Street, 17th Floor  
New York, New York 10038  
**T:** 212 269 6300  
**F:** 212 771 6987  
**E:** [info@interactivedata.com](mailto:info@interactivedata.com)

### BEDFORD

32 Crosby Drive  
Bedford, MA 01730  
**T:** 781 687 8800  
**F:** 781 687 8289  
**E:** [info@interactivedata.com](mailto:info@interactivedata.com)

### CHICAGO

600 West Fulton, 7th Floor  
Chicago, IL 60661  
**T:** 312 896 0300  
**F:** 312 207 1338  
**E:** [info@interactivedata.com](mailto:info@interactivedata.com)

## LIMITATIONS

This document is provided for informational purposes only. The information contained in this document is subject to change without notice and does not constitute any form of warranty, representation, or undertaking. Nothing herein should in any way be deemed to alter the legal rights and obligations contained in agreements between Interactive Data and its clients relating to any of the products or services described herein. Interactive Data Pricing and Reference Data does not provide legal, tax, accounting, or other professional advice. Clients should consult with an attorney, tax, or accounting professional regarding any specific legal, tax, or accounting situation.

Interactive Data makes no warranties whatsoever, either express or implied, as to merchantability, fitness for a particular purpose, or any other matter. Without limiting the foregoing, Interactive Data makes no representation or warranty that any data or information (including but not limited to evaluations) supplied to or by it are complete or free from errors, omissions, or defects.

Interactive Data<sup>SM</sup> and the Interactive Data logo are registered service marks or service marks of Interactive Data Corporation in the United States or other countries. 360view<sup>SM</sup>, FundRun<sup>SM</sup> and Vantage<sup>SM</sup> are service marks of Interactive Data Pricing and Reference Data, Inc. Excel® is either a registered trademark or trademark of Microsoft Corporation in the United States and/or other countries. The Adobe® PDF logo is either a registered trademark or trademark of Adobe Systems Incorporated in the United States and/or other countries. Other products, services, or company names mentioned herein are the property of, and may be the service mark or trademark of, their respective owners.

©2011 Interactive Data